

COMPANY PROFILE



LILAI POWER CO., (KENYA) LTD

利来电力（肯尼亚）有限公司

ELECTRICAL POWER GENERATORS & MOTOR REWINDING

COMPANY OVERVIEW

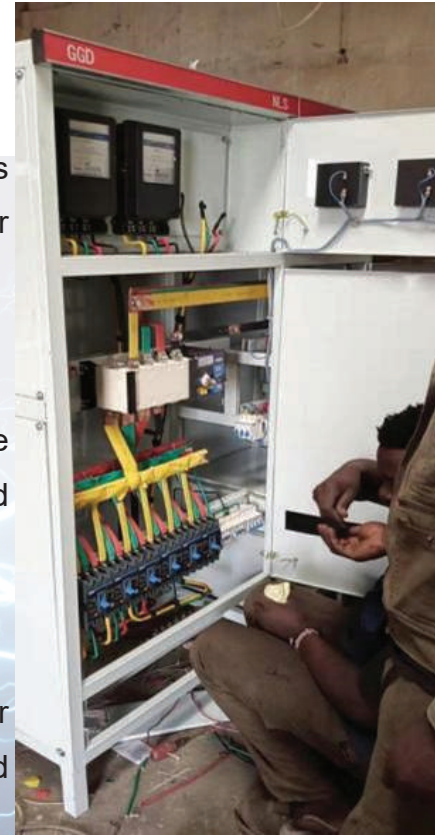
Lilai Power (Kenya) Co., Ltd., established in May 2013. The company has 14 permanent employees, 2 senior electrical engineers, 6 junior electricians, 1 mechanical engineer, 1 welder, and 4 ordinary workers.

Company business location

The company is headquartered in Nairobi, Kenya, and its business scope includes Kenya, Uganda, Tanzania and other 5 East African countries and South Sudan.

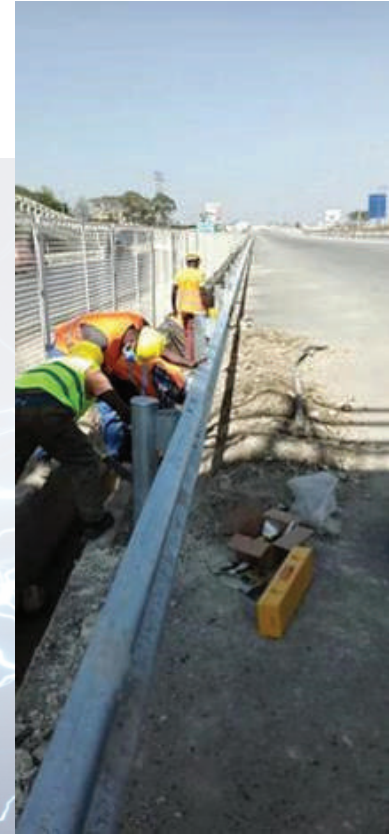
The company's main business scope

The company's main business project is electric power, focusing on power generation, substation, transmission, electricity consumption, and electricity saving.



PORTFOLIO

- » Uganda kiingfisher oil field facilities project (epc package 3)
- » Rehabilitation, upgrading and extension of kigali water supply network and peri-urban area project
- » Installation and commissioning of 33kv, 11kv/400v transformation and distribution equipment at china communications lamu port
- » Installation and commissioning of 11kv/400v power distribution equipment in china communications mombasa terminal
- » Installation and commissioning of 11kv power distribution equipment for china communications nairobi expressway
- » Installation and commissioning of 11kv power distribution equipment in asihe industrial base, wuyi, china, Athi river.



PORTFOLIO

- » China communications mombasa-nairobi railway, nei-malaysia railway station 400v power distribution equipment supply, installation and debugging and troubleshooting
- » China communications, china road and bridge, china state construction, china railway, china hydropower, urban construction third bureau, shengli oilfield, henan international, china wuyi and other chinese companies such as stone plants, mixing plants, camps and other power distribution equipment supply, installation, commissioning and failures deal with
- » Supply, installation and commissioning of 400v distribution cabinets in real estate



BUSINESS SCOPE

The main business includes power system design, power equipment supply, power equipment installation and commissioning, power equipment maintenance and troubleshooting, power equipment energy conservation and consumption reduction, etc.

Company qualification

The company has the first-class qualification of Kenya electric power EPRA-A1, and its business scope covers the installation and commissioning of power equipment at various voltage levels from high voltage to low voltage (220KV, 110KV, 33KV, 11KV, 400V).



COMPANY CULTURE

The company takes focusing on electricity and serving with heart* as the core value, and everything is centered on the needs of users. Through professional services, the company will shape the image of enterprise power and provide service guidance for enterprise product promotion and cultural development.

The company's long-term goal

To grow into a competitive power company in the five East African countries and South Sudan

The company's long-term goal

To grow into a competitive power company in the five East African countries and South Sudan



MACHINERY



CONTACT

LILAI POWER CO., (KENYA) LTD

Industrial Area, Mombasa Road,

Opposite Winners Chapel, Off Likoni Road.Nairobi, Kenya.

Tel: +254703521379

Email: info@lilaipower.co.ke,

pandongcheng001819@gmail.com

Website: www.lilaipower.co.ke